



CENTURIION BOATS
EVOLUTION OF THE SURF BOAT



EVOLUTION OF THE SURF BOAT

First. Better. Different.

Nearly 30 years ago, it was water sports enthusiast inspiration that led Centurion to become the first company to design a boat built specifically for wake surfing. This marked the point when Centurion shifted the design-focus of a boat heavily towards user benefit. It might not have happened. Centurion's Wave, a new wakeboard boat, was on the water being tested, but a newly land-locked ocean surfer on Centurion's team had been missing his waves. When the wakeboard testing was completed, the surfer was allowed to get his fix, and the people in the boat saw something they had never seen before. With the boat going a slow 11 mph, and the passengers' weight on the surf side, it threw a big enough wave that the surfer got up, dropped his rope and carved across the wave. The test team found themselves with front row seats to the soul-speaking joy of surfing. They were so surprised at what they saw, they asked him to do it again. And when he did, a new towed water sports discipline was born and wake surfing had its first tow boat designed, by Centurion. With the advent of a boat that allowed anyone, anywhere to surf – even in the middle of the country – a community of inland surfers grew and a sport took hold. There from the beginning, Centurion is still supporting that growth through the evolution of its boat designs, the creation of surfing competitions, and being dedicated to receiving feedback from the surfers themselves. Thirty years later Centurion stands above all the others as the maker of surf-first boats. Instead of a boat that could be used for wakeboarding, Centurion pivoted to turn the original Wave design into the Enzo – a boat designed for surfing that could also be used for wakeboarding and a smooth, rough-water ride. Today, the Centurion Opti-V Hull, with its evenly placed and rapidly filled ballast, creates the world's best waves, wakes and ride. Despite the success and growth, Centurion stays rooted in its dedication to growth through feedback, from anyone – surfers, drivers, dealers, employees – and implements the changes that make their boats simply the best wake surfing boats in the world.

OPPOSITE: Rick Lee and Centurion Wave Test Team witnessing wake surfing behind this new wakeboard boat.





LEFT: Rick Lee founded Centurion Boats in 1976 and created the first wake surf-specific towboat in 1995.

OPPOSITE: Centurion's designers and testing team working out the kinks on the Wave and Wave Comp circa 1994-1995 on lakes McClure, Yosemite and Tahoe.



Photo Shoot 1994



The Wave 1995



Summer 1995



The Wave Comp 1994



Lake Testing 1995



Lake Tahoe 1995





LEFT: The Wave surf wave testing in 1995 at Lake McClure in California. The team went through multiple board types to see what would work best with the wave. At this point there were not wake surf specific boards.

OPPOSITE: Surfing one of the first Centurion Enzos, late nineties. The Enzo would become one of the best surf specific boats for the next twenty years.



It All Starts with the Foundation — the Hull.

It's the key design that propelled Centurion to the top of wake sports. Even while other boat companies were concentrating on making the flattest wakes possible for the popular sport of water skiing, Centurion was already noticing the rising popularity of wakeboarding. The designers created a boat to make wakes suitable for wakeboarding and when a surfer demonstrated it could also be used for that, a concept took hold and designs were modified. Through testing, feedback and innovative thinking, Centurion adapted and optimized a deep-v hull, added ballast, and built the first wake surfing dedicated boat on its unusual Opti-V Hull. Released in late 2016 on the 2017 Ri257, the Opti-V running surface continued to offer the smooth rough water ride of the deep-v design, more displacement with less ballast weight and World Championship level surf wave. When we added triangular, lifting pads on the rear corners of the boat we got the heaviest part of the boat up and out of the water – completely counterintuitive to the way we think of wake boats working. The lift created by the Opti-V design is just enough to create balance that eliminates side to side weight sensitivity and thus achieve a symmetrical wakeboard wake, as well as a world class surf wave achieved quickly on either side of the boat. We didn't stop there. With the addition of hook into the 2021 Ri Series' Opti-V, the wave was created more quickly. In the 2023 Fi Series, turning became tighter due to rear balancing triangles that extend farther forward toward the bow of the boat. In 2025, we continue to tweak and refine this special design to create the world's best waves, wake and ride.

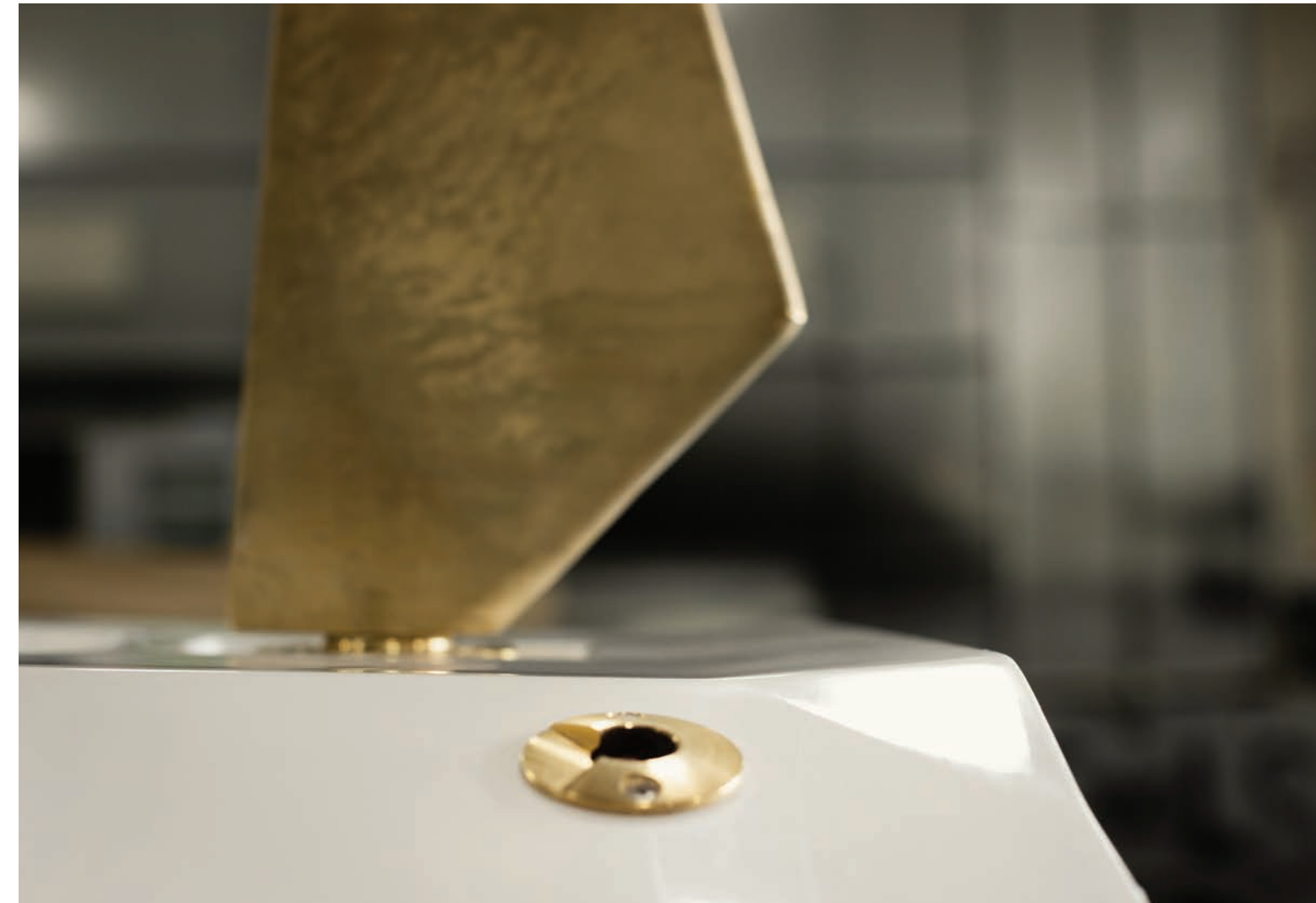
OPPOSITE: Centurion's Opti-V Hull extends deeper into the water displacing more water with less ballast weight, while staying balanced.

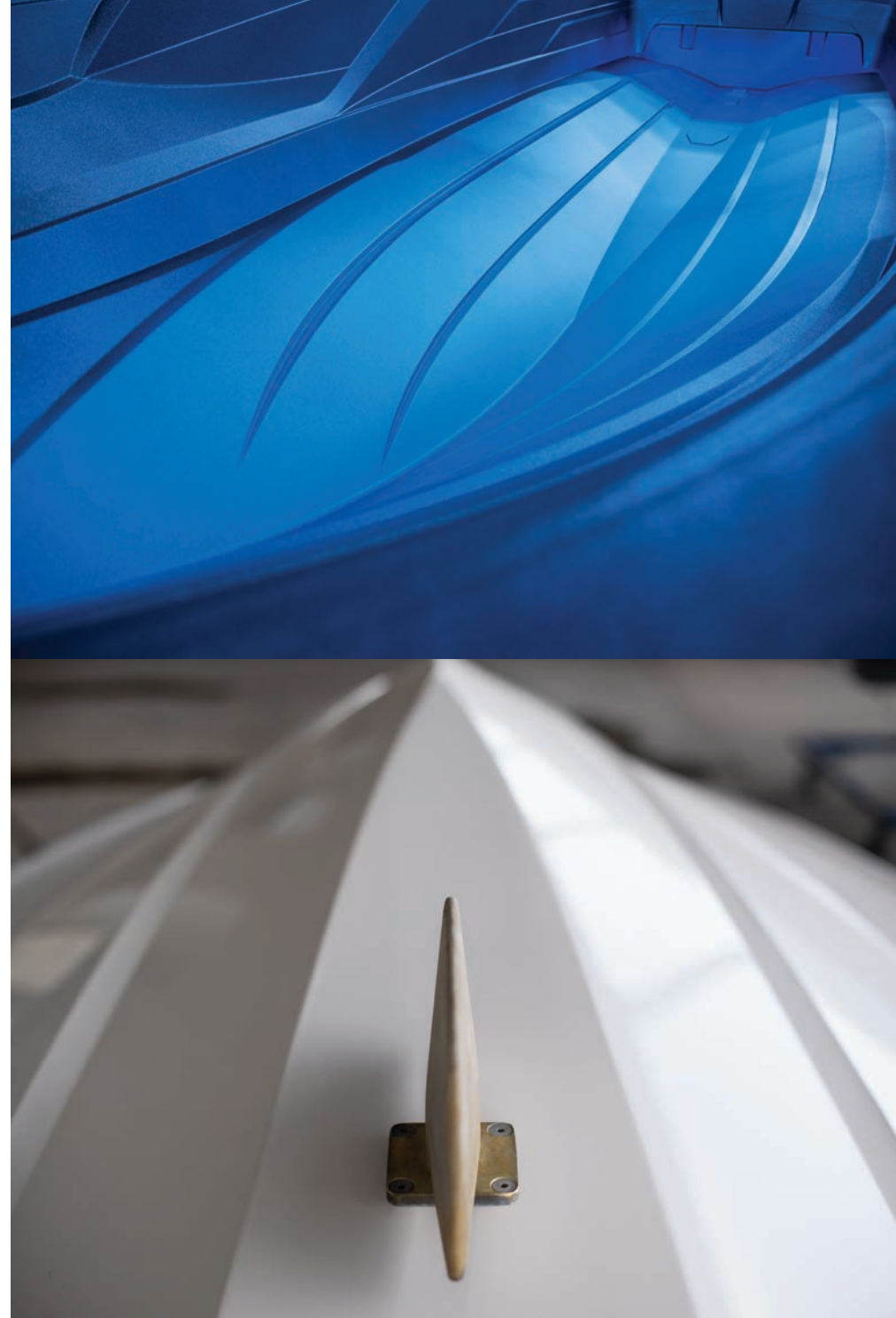




LEFT: This 2025 Centurion Ri230 is being pulled from the mold, in the Pull and Grind Department at the Merced, California factory.

OPPOSITE: The hook built into the 2025 Opti-V Hull running surface at the rear edge of the delta pad. This slight lip creates lift at the back of a Centurion reducing bow rise and allowing the boat to run level from bow to stern.





LEFT TOP: This is a Centurion Ri hull mold between color sprays during the Gel Coat process.

LEFT BOTTOM: The Centurion Articulating Tracking System (CATS), is installed once the hull is turned upside down. This option deflects the nose of the boat toward the port or starboard, which eliminates the lean from side to side even with passenger weight offset.

OPPOSITE: Centurion Ri Opti-V Hull with triangular lifting pads and 20 degrees of deadrise at the transom.





LEFT: This 2025 Centurion Ri265 demonstrates the smooth ride of the Opti-V Hull. The deep-v of this hull cuts through the chop and absorbs the shock of a rough water ride.

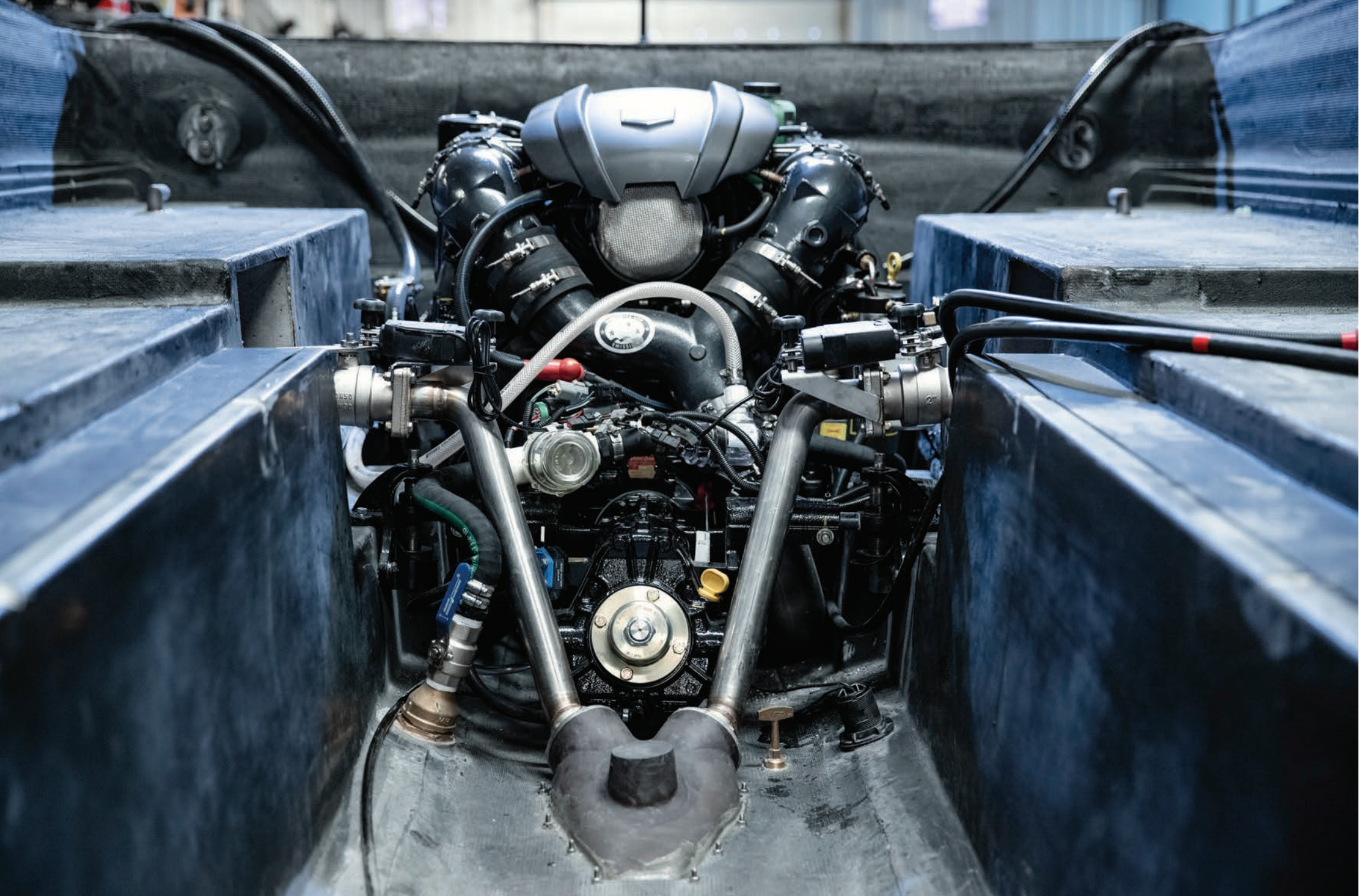


More Time on the Water Equals Less Time at the Pump.

The Opti-V Hull was not only a revolutionary design for wake surfing, but it introduced a level of fuel efficiency unheard of before – giving Centurion Boats the advantage of being up to 50% more fuel efficient than comparable boats. That represents significant savings in cost, equaling more time on the water. The hull, which allows the sharpest part of its keel to slice through water, also has lift at the back of the boat that flattens the running attitude. This eliminates resistance created when excessive bow rise causes the boat to push water instead of slicing through it. This lack of resistance prevents the engine from working harder than necessary. This efficiency has a cascading effect that results in less noise for a lower interior decibel level (about the same as a dishwasher). In addition to the noise reduction the Pleasurecraft Marine (PCM) marinized engine, by GM, uses direct inject technology insuring fuel efficiency. The engine also benefits from the Centurion Power Pull System which combines a specially calibrated 2 : 1 gear reduction on the ZZ5 and ZZ6 engines with a precisely matched prop for maximum low end pull with minimum engine exertion. This means our boats are optimized for pulling riders without compromising your boat's power and engine integrity over time. Better fuel economy means less time spent refueling and money saved. If you are a data junky, you can watch your fuel efficiency in real time on the Range of View (ROV) system in the Centurion Ri Series. The bottom line is, the efficiency of Centurion boat operation saves you money and gives you more enjoyable time on the water. What could be better than that?

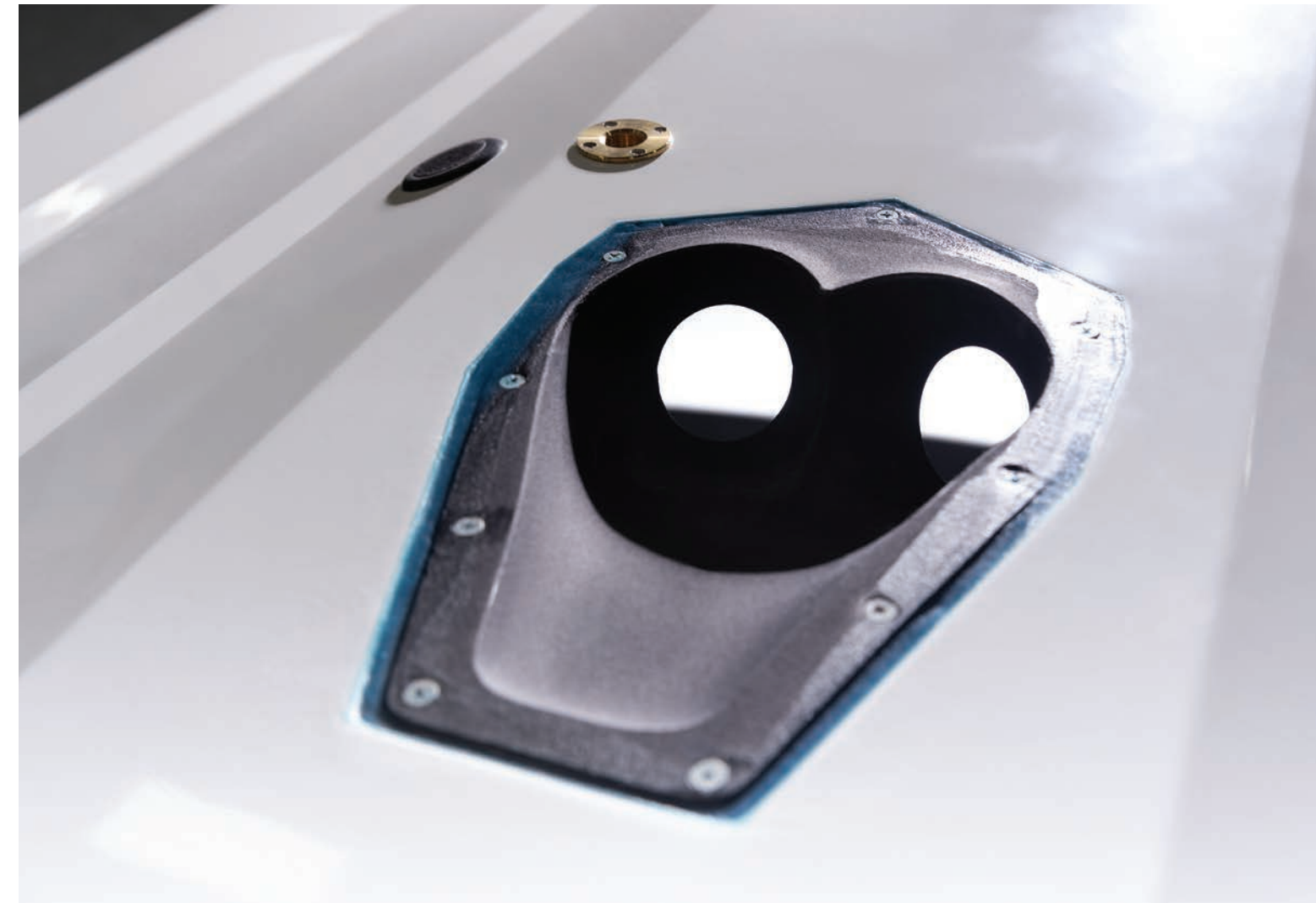
OPPOSITE: The 2025 Centurion Ri265 with RAMFILL² overflows through the Roswell vent when this ballast system is full in 90 seconds.





LEFT: Centurion's RAMFILL² scoop is located just in front of the engine. Both of the filling 2" stainless steel ball valves can be opened to allow as much as 2900 pounds of water to fill the sub-floor lounge tanks in 90 seconds at 14.9 miles per hour.

OPPOSITE: The RAMFILL² scoop is recessed into the Opti-V Hull and positioned to allow water to be rammed into these cavernous tanks at a fill-time of 90 seconds.





LEFT TOP: The supercharged direct injected ZZ8S from PCM offers 665 foot pounds of torque with a Power Plus Super Duty Transmission and a 1.7:1 gear reduction. This golden lit Centurion engine option looks as good as it performs even fueled by 89 octane.

LEFT BOTTOM: The significance of the Centurion deep-v hull can be seen at the transom where there is 20 degrees of deadrise from the delta pad to the outside chine. This hull design allows Centurions to displace more water with less ballast weight as well as divert the rough water from the bottom of the boat.

OPPOSITE: The Range of View (ROV) system available on the Centurion Ri Series gives the driver a forward and rear view of the water around them as well as realtime trip and fuel usage data. We have said for many years that Centurions are 50% more fuel efficient than competitive offerings, now you can see for yourself.



Centurion Ballast Benefits Go Well Beyond the Wave.

Early in the design process of building wake boats it became clear that ballast would play a pivotal role in creating great waves. Each boat manufacturer had their own take on ballast, but Centurion engineers opted for ballast placed evenly throughout the boat, to keep the performance smooth and efficient and create the most consistent wave possible. All of the ballast available in Centurion boats (up to seven precisely placed ballast locations that combine for up to 5850 pounds of ballast) is evenly distributed. The majority of this ballast is placed deep within the hull, it doesn't interfere with storage or interior space. And because it goes along the length of the hull it creates longer waves. Large sub-floor tanks on each side of the lounge also create consistent push from the face to the curl. The balanced running attitude of our ballast eliminates bow rise allowing drivers to sit comfortably in place and see everything. You won't see the driver of a Centurion standing up when they tow a surfer because there is plenty of visibility and control from their seated position. This even distribution of ballast is also a contributing factor to our exceptional fuel efficiency, up to 50% more than comparable boats. We call our available RAMFILL² ballast system the "Baller." It's a nearly maintenance free system that offers as much as 2900 pounds of ballast capacity that fills in 90 seconds. Plastic is eliminated, as instead we have four stainless steel two-inch ball valves (two in two out). Yes, Centurion ballast is different. It's optimized for the best possible experience – both outside and inside the boat.

OPPOSITE: In the Centurion Ri265, as much as seven independently controlled ballast areas combine to create 5850 pounds of displacement to produce more than a 26-foot long wave.





LEFT: A Centurion has strength at its core with a specifically designed stringer system that houses as much as 3350 pounds of ballast and welcomes six stable mounting points for a PCM engine.

OPPOSITE: The stringer system is the chassis of the boat and therefore the platform through which the boat transfers power to the water. For this reason the stringer system is welded to the inside of the hull with Plexus, a chemical adhesive that changes the molecular structure of the fiberglass making two pieces one.





ABOVE: As much as 5850 pounds of ballast displaces the hull 10 inches farther into the water to generate the waves and wakes Centurion is known for. There is no replacement for displacement.

OPPOSITE: The locations of Centurion's ballast are distributed evenly throughout the boat to displace the entire running surface and create a longer, pushier wave. This balanced approach to weight distribution also eliminates bow rise allowing the boat to operate more efficiently.





LEFT: Because Centurion evenly distributes ballast areas, the driver has a view of the horizon from a seated position and the surfer enjoys a wave as long as the boat.

OPPOSITE: Centurion adapted a wake surf-specific boat to wakeboard with the invention of the Opti-V Hull.



The Wave that Started it All — Our Surf Spectrum.

One of the things that sets Centurion apart from any other boat for wake surfing is our deep understanding of what it takes to build a great wave. Most boats offer a sweet spot for push, usually located just off the back of the swimstep. Centurion offers a spectrum of surfable power, more than 26 feet long, from the crest of the curl all the way up to the face of the wave. We also understand it takes more than evenly distributed ballast to form a great wave and have pulled together all the elements to do that. The ballast creates the displacement, but we weight the entire running surface down so it sits deeper in the water from bow to stern, accounting for the length of our wave. Then there's the push. Push, or the "hardness" of the wave, describes how well the water pushes the surfer along without letting them fall through the wave. Not enough displacement and the wave comes out soft with little push. Just the right amount of displacement and you get a hard wave with lots of push. Where Centurion steps it up is coaxing a curl from the displaced water by commanding the flow of water behind the boat. Thanks to the design of our Opti-V Hull, our curl is created not by diverting the flow of water off its path so it converges on the displaced water behind the boat, as other manufacturers do, but by shaping the wave with slightly more displacement on the surf side. Our Stinger Wake Plate changes the running attitude of the boat, and our QuickSurf Pro system deploys opposite the surf side to create lift. By lifting the rear corner of the hull on the non-surf side of the boat, the Centurion lists slightly towards the surf side, displacing that surf corner. This extra surf side displacement coupled with that slight list towards the surf side creates the curl. When you want the curl on the other side, all you have to do is touch surf left or surf right on the Ri's Captive Touch screen.

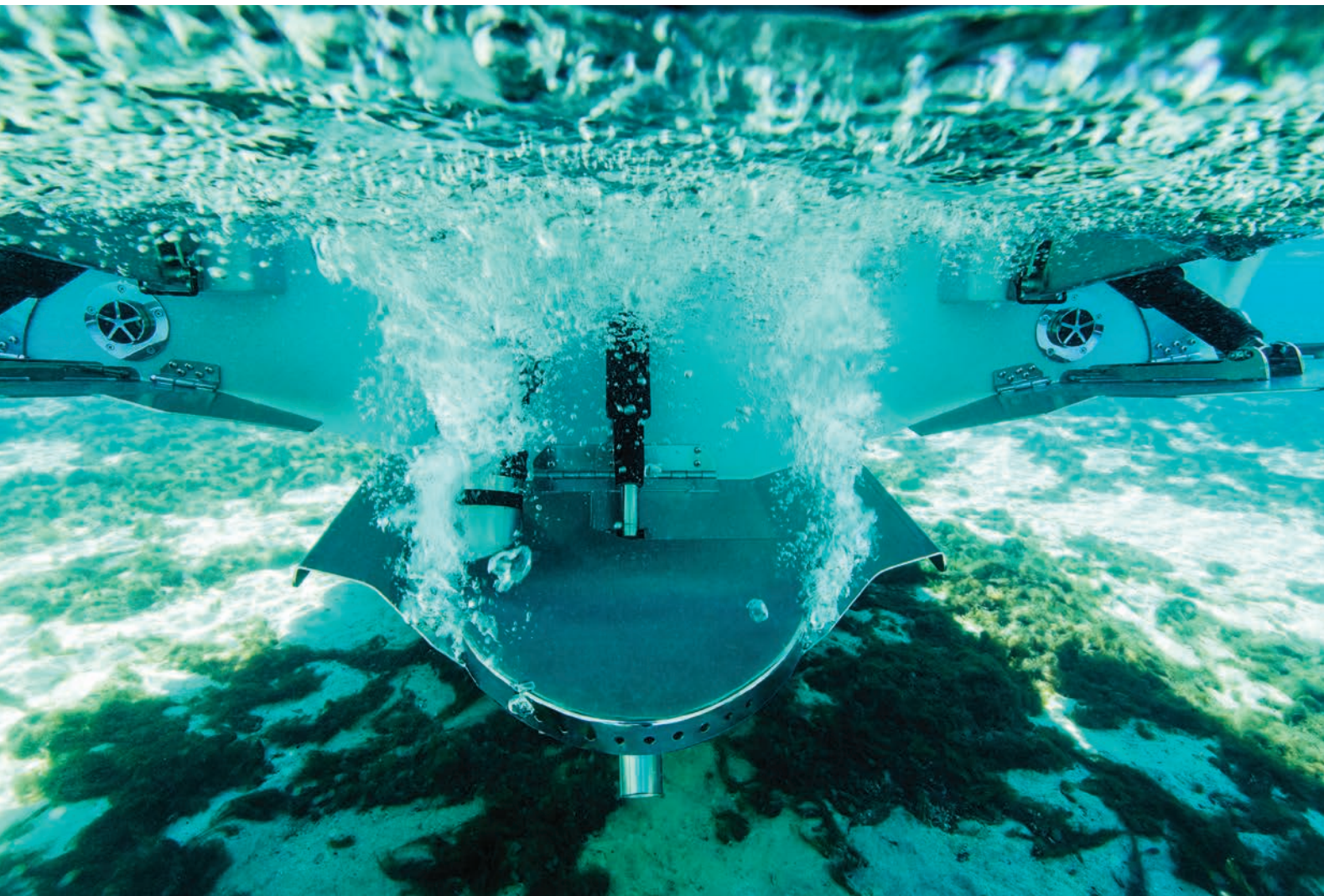
OPPOSITE: Once your ballast is full, ZeroOff speed control set and QuickSurf Pro engaged all you have to do is throttle-up to experience the most ocean-like inland surf wave in the industry.





ABOVE: When you are a surf style rider you need a steep hard wave with a lot of momentum behind it to propel you to that next aerial trick.

OPPOSITE: You charge the wave to gather enough speed to launch into your surf moves. It helps to have the length of a Centurion wave with consistent power from the crash of the curl to the smooth face.



LEFT: The Silent Stinger Wake Plate is a trim tab that adjusts your attitude. Not only does it change the running attitude of a Centurion, it also changes your attitude on the water by keeping the engine noise inside voice quiet.

OPPOSITE: The Stinger and Silent Stinger Wake plates can change the shape of your wave. Add more plate and you will see the wave elongate while at the same time flattening the top. Take the plate back towards zero and the wave will shorten and steepen, creating a larger curl.





LEFT: Ballast and passenger weight can be evenly distributed in a Centurion to achieve a professional level surf wave with the help of QuickSurf Pro. QSP creates lift opposite the surf side to displace the surf-side corner slightly more and create the curl.

RIGHT TOP: Centurion's QuickSurf Pro is actuated by high speed rams. You can transfer the wave from surf left to surf right with a touch of the Captive Touch screen in 1.8 seconds.

RIGHT BOTTOM: The QuickSurf Pro plates are manufactured in the USA out of thick stainless steel that is polished to a high shine and branded with the Centurion Warrior's Wave.



We Continue to Evolve Staying Open to New Inspiration.

A good idea is a good idea, no matter where it originates. If we hadn't let that surfer try his game behind our original wakeboard boat, and recognized what was possible, we would not be where we are today. So we listen to feedback – from our athletes, our boat owners, and our employees. If someone has an idea how to make our boats better, we listen. Often, we implement changes based on that feedback. That's why we have fuel fills on both the port and starboard side of our boats today. It's why you will find convenient phone charging stations in our boats, and why you no longer have to dig through storage to access the batteries. If you want to know how to make something better, it just makes sense to listen to the people who use your products day after day after day. From walk-through trash receptacles to swiveling board racks to our speaker distribution, Centurion design touches aren't developed in a vacuum or pulled from the imagination of some engineer who doesn't get out on the water. They are influenced by hands-on, real-life experiences. When you join the Centurion Family, you automatically become a participant in this great idea exchange. We look forward to your input.

OPPOSITE: The Ri245 is our most sold Centurion. This popularity comes from the application of signature features and design that make this surf boat unlike anything else on the water. What makes it so different? The continuous improvement of this boat is inspired by its enthusiasts.





LEFT: The Range of View (ROV) system includes front and rear facing cameras along with a detailed look into real time trip and fuel usage data. Standard on the Centurion Ri Series, the ROV allows the driver to see in front, behind and inside simultaneously for a range of views.

OPPOSITE: Why would you ever need a camera on the bow of your Centurion? Centurions are tall boats. They have a lot of freeboard because they create such amazing waves and wakes. We never want you to take water over the front or the back. But being this tall makes it more difficult to see the water directly in front of you or the trailer as you are trying to load. The ROV bow camera allows you to see everything you need to.





LEFT TOP: Centurion's Predator Power Tower (PPT) by Roswell is almost as customizable as the boat itself. The top color of the PPT can be changed to one of 18 different colors in contrast to the legs. The SingleShell top racks and the BombShell 2.0 swivel racks can also be customized with these colors along with the SurroundFire Sound System by Roswell.

LEFT BOTTOM: Standard features on the PPT include accent and down-lighting as well as built-in hanger for ropes vests and other tools of the surf trade.

OPPOSITE: The Centurion Predator Power Tower is made in the USA by Roswell. It holds a 9-foot rigid bimini that can be raised and lowered by smart linear actuators, while remaining parallel to the floor. The PPT can tow a rider at any height. This tower can also be towed on a trailer in any position with the bimini canvas up.





LEFT: We prioritize comfortable hang-out sessions as much as epic surf sessions. Centurion interiors are made to be luxurious looking and feeling, while maintaining a level of comfort that is typically reserved for your living room.

OPPOSITE: Versatility of seating is important. We don't claim to know exactly how you will use your Centurion on every occasion. This is why you can customize the interior to fit your passengers each day you are on the water.





LEFT: It may seem like a small thing, but specific storage areas for trash is a big deal. You want your garbage to be out of sight while at the same time being easily accessible. We have moms that work here. They don't want to be cleaning up when they are on the boat.

OPPOSITE: Wireless Charging Clamping Cell Phone Holders rock! We have four of them in every Centurion Ri so you can make sure your phone is charged, accessible and secure all day on the water.





LEFT: Centurion vinyl is made by Spradling with a 17 mil top coat to guard against staining and abrasions. This vinyl is sewn together with Teflon thread in seams of double and triple stitching. There are no corners cut or steps skipped when crafting a Centurion interior built to last.

OPPOSITE: GatorStep flooring is meant to prevent slipping, but in a Centurion it is used as another opportunity for customization with a luxurious look and feel. You can also choose to honor the men and women of our military, first responders and frontline workers with our Centurion Salute to Service option.





ABOVE: Conveniently accessible battery management is another user inspired innovation from Centurion. We have transformed the isolator switch buried in the observer's storage area into a truly isolated system conveniently located in the glovebox next to a PDM switchpanel for troubleshooting.

OPPOSITE: A Centurion Ri Series driver benefits from the coolest toys. The Lit shifter and lighted Centurion badge at the throttle console, proves, "He who drives the coolest toys, wins."





LEFT: Centurion's BombShell 2.0 swivel racks by Roswell can accommodate wakeboards or surf boards as wide as 23". These racks don't just get your boards off the floor, they also offer built-in hangers for wet vests as well as specific holders for the flags you are flying.

OPPOSITE: Centurion's Predator Power Tower (PPT) can be adorned with SingleShell surf board racks by Roswell that store a surf board on edge perpendicular to the sun for protection and easy access. The Warrior 2.0 Stereo System by WetSounds is available on the PPT to shoot beautiful sound back to the rider independent of the interior speakers that can be adjusted for passengers.



We Are the World's Best Waves, Wakes and Ride.

When we say wake surfing is in our DNA we mean it. Three decades ago, when we were just building our first wakeboard boat, we saw an opening and we pivoted – and we embraced a sport that didn't yet exist inland. We took what we learned and built better waves, then we supported the sport through competition and community. We saw community grow from like-minded people who loved the wake surfing lifestyle and rather than view each other as competitors, cheered each other on and supported each other when they did well. It has been a remarkable journey as we opened a door for a market to emerge and we're so happy we did. Our boats are better because of it. Our community is stronger because we listen and respond to it, and we can honestly say Centurion offers the best waves, wake and ride for watersports enthusiasts. If you want to be a part of this community, please join us. Whether you are a beginner or aspiring professional, we welcome all levels to express themselves behind our boats and enjoy the experience of being on the water together doing something we all love. Instead of designing something and trying to convince you it's what you need, we respond and deliver what you want. That's how we came to build boats with the world's best waves, wakes, ride and fuel efficiency. We didn't have to force our design, it grew out of these ideas naturally.

OPPOSITE: We relish the risk of being first and paving the way. When the reward comes, we look for the next challenge that you want to see overcome and we do it again.











It Takes a Village, Our Community Makes the Difference.

There's something unique about the wake surfing community. Where other sports saw adversaries, wake surfing saw camaraderie. We saw this as the sport grew, after we started the Centurion World Wake Surfing Championship. Competitors were genuinely thrilled for each other when they succeeded in doing new tricks or mastering a maneuver they had been working on. Maybe it stems from the sheer joy people experience the first time they ride a wave. It's common to come off that experience wanting not to brag, but to share and to want others to feel that same exhilaration and oneness with the water. Our community is filled with people from all walks of life who trade conflict or worry for calm and cooperation when they are on the water. People in this community like to help each other and have a bond in their love for this sport. We support that same spirit through our We Wake Waves movement. We wake waves of positive change and want to inspire that service in others. We partner with organizations who offer outreach to a wide variety of people who might not otherwise have an opportunity to experience this sport. Whether it is service members, first responders, frontline workers, the less fortunate, recovering addicts, or those in need of God's word, we want to make their lives better.

OPPOSITE: Centurion boats come with their own cheering section. All you have to do is give it a try and you will be rewarded with a feeling of empowerment and peace from a life made better behind the boat.





LEFT: In the morning at Operation Get Out (OGO)'s Get Out Girl Surf & Paddle Jam we float together as a tight group to remember Kristin McLain and Jessica Hollis who were first responders lost in the line of duty. We remind ourselves to be intentional with our individual wellness and thank God we have the opportunity to do that in, on and around water.

OPPOSITE: Steve and Cindy Present have both lived wonderful lives of water sport. As the founders of Operation Get Out (OGO) they want to share the empowering properties of water with the World. They are realizing this dream through the execution of Centurion Salute to Service events in addition to many other events geared at empowering others through nature and being outdoors.





LEFT: A Centurion wake surfing community would not be possible without a series of competitions that challenges everyone to improve the sport. Nicole Hudson is the head judge of Centurion's World Series of Wake Surfing. Nicole works tirelessly with a group of amazing volunteers who make these events fun and fulfilling for all.

OPPOSITE: Ken Scribner is Centurion's caring cowboy. This strong integrity-based Texan is a Water Sports Warrior. Ken is in the saddle of a Centurion Ri for thousands of hours each season towing World Series of Wake Surfing competitions all over the United States. He also tows the Centurion event trailer to get to these events, working with a crew of volunteers to set-up and breakdown each one.





LEFT: Centurion Water Sports Warrior, Grant Korgan, brightens even the darkest of days with his unending positivity and kindness. But above all, Grant is a competitor seeking to exceed every challenge simply to show others it can be done and to never give up. Whether he is breaking World records or inspiring one of us through a phone conversation, Grant gives 100% of himself all of the time.

OPPOSITE: Centurion Water Sports Warrior, Matt Manzari, is as tough as he is purpose driven. He would tell you, "...you can get through anything, with the love of Jesus Christ." Matt is a motivational speaker who credits God and his family for helping him heal. Matt is an amazing example of God's Glory brought to life.





LEFT: Centurion Water Sports Warrior, Robby Maschhaupt or the Gas Man as he is affectionately known, is changing the World with his huge heart for giving back to those who serve our country. Through Operation Wake Surf, his service charity, Robby positively affects the lives of hundreds of service members and first responders each year. Through Centurion Salute to Service events Robby gives back at every opportunity. He also drives for many WSWS competitions. He fuels us all to want to make life better for others.

OPPOSITE: At Operation Wake Surf events military and first responders get the chance to focus on learning to surf or just being out in the boat relaxing. They get a small break from their trauma to feel accomplished and appreciated. This Marine veteran turned firefighter got up for the first time in this photo. He has been to this same OWS event each year getting better and better at wake surfing.





LEFT: We are a family. We are a family founded in innovation, bound by the pride of craftsmanship and rewarded with the opportunity to make lives better.

RIGHT TOP: This is not just a job for us. We come to work everyday to continuously improve as well as recognize improvement in our brothers and sisters.

RIGHT BOTTOM: We build boats to the Glory of God with a goal of making life better that is supported by our work prioritizing people, performance and philanthropy.





ABOVE: We work hard to build an artisan product that must be touched by 90% of our work force. We are so appreciative that our customers choose to invest in Centurion Boats.

OPPOSITE: Many of us have worked here for decades and we are honored to build others up in hopes that they will continue to make lives better and better.





LEFT: It is not just about the boats. Working here is our opportunity, not just to bring home a paycheck, but to build joy in others and ourselves.

OPPOSITE: We are all very different from one another, but the joy we seek is the same. The employees of Centurion Boats will continue to make lives better because that is what brings us joy.





EVOLUTION OF THE SURF BOAT





CENTURION BOATS